

PR

PRIME RESIDENCES BY PRIME DEVELOPMENTS



A Prime Lifestyle Awaits.



PRIMETM
DEVELOPMENTS

WWW.PRIMEDEVELOPMENTS.IN

CALL - 93 55 100 111

Corporate Address: Unit No - 101, Good Earth Trade Tower, Sector - 62, Gurugram, Haryana - 122101

Disclaimer: This brochure is for general information only and does not constitute an offer or invitation to purchase any property. All images, plans, features, and amenities are indicative, subject to change, and not legally binding. Actual specifications may vary at the time of possession. Buyers are advised to visit the project site, verify details independently, and not rely solely on this brochure or any visual representations. The project is being developed in phases—certain amenities may be shared across phases. Rates exclude GST and other statutory charges. All sales are governed by the terms in the application form and agreement to sell. For accurate and updated project details, RERA registration, and approvals, refer to official documents or visit <https://haryanarera.gov.in>.

COUNTRY SIDE PROPERTIES PVT LTD.

CIN: U70100HR1993PTC100741 RERA No.: 03 of 2025 dated 14.01.2025

*T&C apply. 1 Sq. mt = 10.7639 sq. ft. Travel times (if any) are based on Google Maps and may vary.

ABOUT

R

PRIME
RESIDENCES
BY PRIME DEVELOPMENTS

Prime Developments' first residential venture, Prime Residences, is much more than just another residential development—it stands as an architectural marvel that seamlessly blends modernity with the natural charm of its surroundings.

Located at a stone's throw distance from Golf Course Road, Southern Peripheral Road, and Sohna Road, Prime Residences is the perfect abode for those who seek city connectivity with countryside serenity.



CONTENTS

04

Connectivity

14 - 17

Prime Residences
Club Prime

05

Locate us on the map

18 - 19

Site Plan of Prime
Residences

06 - 07

First Impressions

20 - 31

Floor Plans

08 - 09

Prime Residences
at a Glance

32 - 33

Specifications

10 - 11

Outdoor amenities

34 - 35

About Prime
Developments

12 - 13

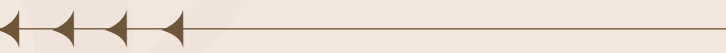
Step Into Your New
Home

36 - 37

Leadership



OPEN THE GATEWAY TO UNMATCHED *CONNECTIVITY*

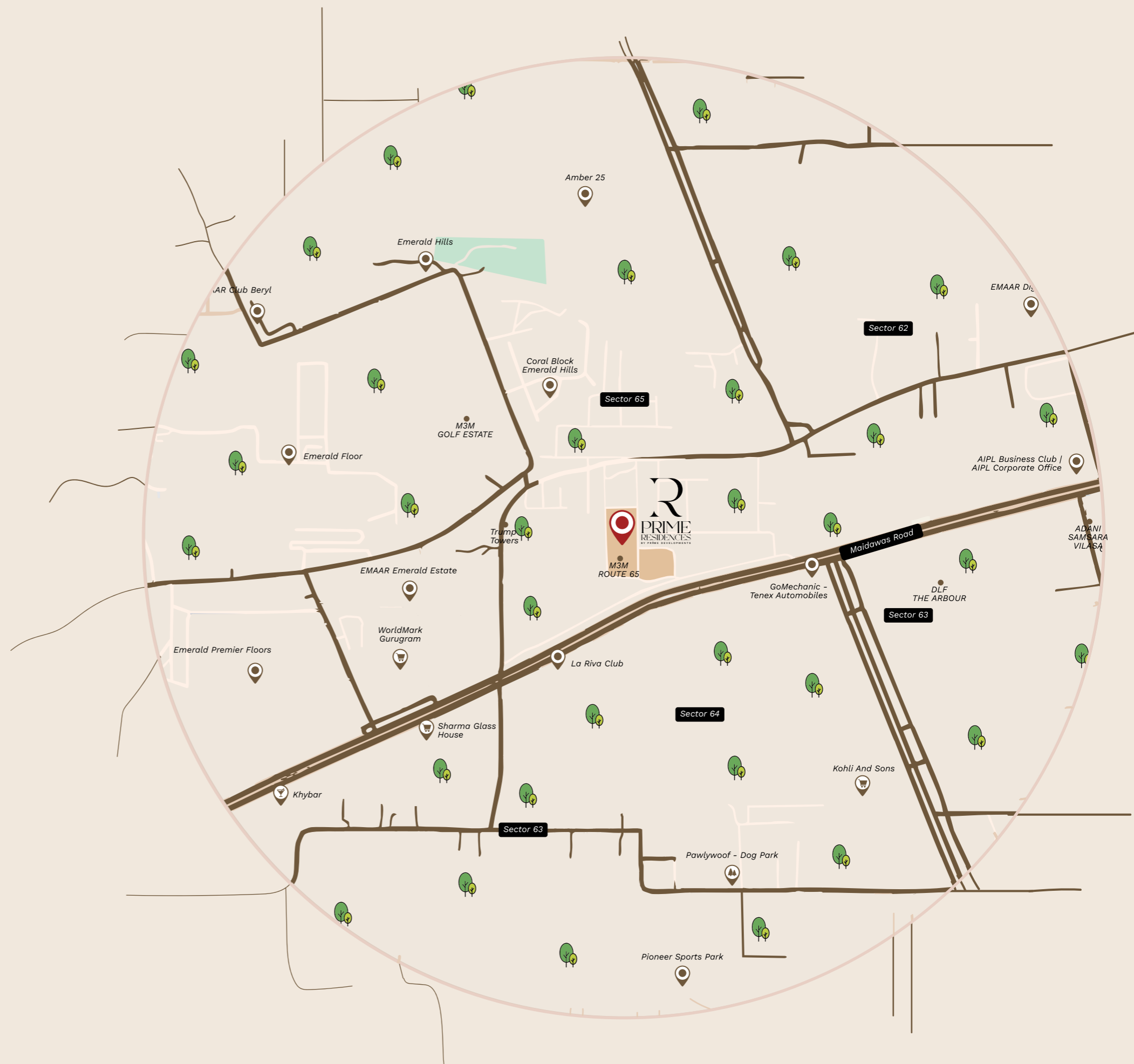


Nestled in the heart of Sector 65, Gurugram, Prime Residences offers unparalleled proximity to major roads, highways, malls, renowned schools, top-tier healthcare centers, and more.

Experience connectivity like never before!

DISTANCE

Golf Course Road	5 Mins
Sohna Road	10 Mins
Sector 55-56 Rapid Metro Station	10 Mins
Dwarka Expressway	15 Mins
DLF Cyber Hub	20 Mins
IGI Airport	30 Mins





Artistic Impression*

FIRST *IMPRESSIONS*



Prime Residences makes for an experience brimming with luxury right from the get-go—starting right at the main entry gate.

But no! This isn't another story of old wine in a new bottle.

TRUE LUXURY DOES NOT NEED TO BE OVERLY COMPLEX.

Based on this philosophy, Prime Residences' structure focuses on clean lines, minimalistic designs, and seamlessly blends elegance and functionality.

Beyond its hassle-free, low-maintenance row housing concept, the property boasts generous outdoor spaces, including a clubhouse, walking paths, play areas, and recreational zones. With energy-efficient lighting and water systems, it's thoughtfully designed to foster healthy, sustainable living.

GET READY TO EXPERIENCE SIMPLICITY IN MODERN LUXURY!



1 Premium Quality Interiors & Finishes

Imported marble flooring, acrylic emulsion paint, cove lighting, and vitrified large-format tiles for a high-end, durable aesthetic.

2 Safety & Security

24x7 CCTV surveillance, video doorbells with smart locks, and 100% privacy-compliant floors for enhanced safety.

3 Energy Efficiency & Climate Control

Customized VRV air conditioning with pm 2.5 air filter, UPVC/ aluminium powder-coated windows, and 100% electricity backup for uninterrupted comfort.

4 High-Quality Construction & Earthquake Resistance

Advanced materials, earthquake-resistant design, and FRLS wiring for structural safety and fire protection.

5 Luxury & Convenience in Everyday Living

Fully equipped modular kitchen, modern bathrooms with premium fittings, and ample parking space for hassle-free living.



Artistic Impression*

OUTDOOR *AMENITIES*



Play Area – Elevate your fitness game without leaving the comfort of your community. Enjoy an invigorating workout or a friendly match in the dedicated play areas.



Cafeteria – Savor moments that matter—share coffee, conversations, and lasting memories with your community.



Club Prime – Club Prime is filled with joyful laughter and cherished memories, that are accompanied by the most delectable snacks and drinks!



STEP INTO *LUXURY*




At Prime Residences, luxury isn't just about space—it's about an experience designed for comfort, exclusivity, and impeccable attention to detail. Every element, from the grand entrance to the smallest finishing touch, is crafted to elevate your lifestyle. As you move through each space, one thought will stay with you: "Every detail is thoughtfully designed."



Artistic Impression*



SNEAK PEEK INTO
YOUR *NEW HOME*

 Residential Amenities

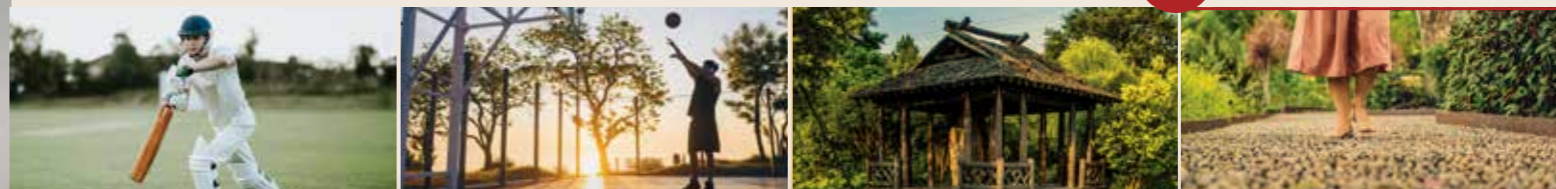


Clubhouse Swimming Pool Outdoor Gym Kids Play Area Jogging Track




Multipurpose Court Senior Citizen Zones Amphitheatre Library Cycling Track

 Park Privileges




Cricket Practice Pitch Basketball Court Pergola Reflexology Court

 Security Features




4-tier Security System CCTV Surveillance Smart Visitor Monitoring System Round-the-Clock Security

 Sustainability Features



Water Treatment System Rainwater Harvesting Sewer Treatment

 Technology Integration



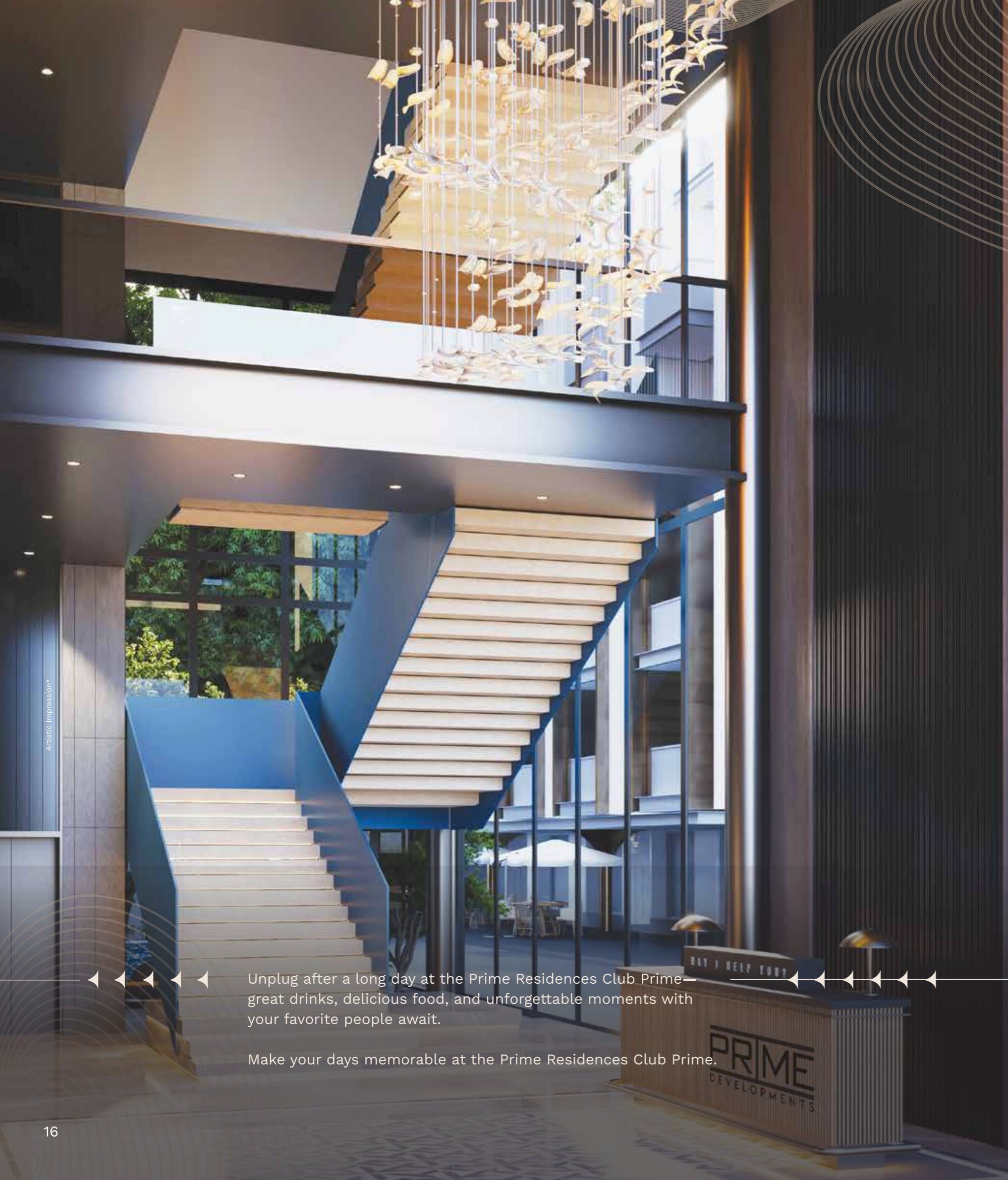
Smart App for Shared Facility Use Home Automation Features Optic Fibre Connectivity



CLUB PRIME

30,000 SQ. FT.
OF PURE BLISS





Artistic Impression*

Unplug after a long day at the Prime Residences Club Prime—great drinks, delicious food, and unforgettable moments with your favorite people await.

Make your days memorable at the Prime Residences Club Prime.

HAY I HELP YOU!

PRIME
DEVELOPMENTS



Restaurant Cum Bar



Double Height Reception



Cafeteria



Gym



Pool



Kids Play Area



Cards Room



Yoga/Dance Room



Business Centre



Indoor Games



Green Park



Open Terrace



Library



Banquet Hall



Baby Creche

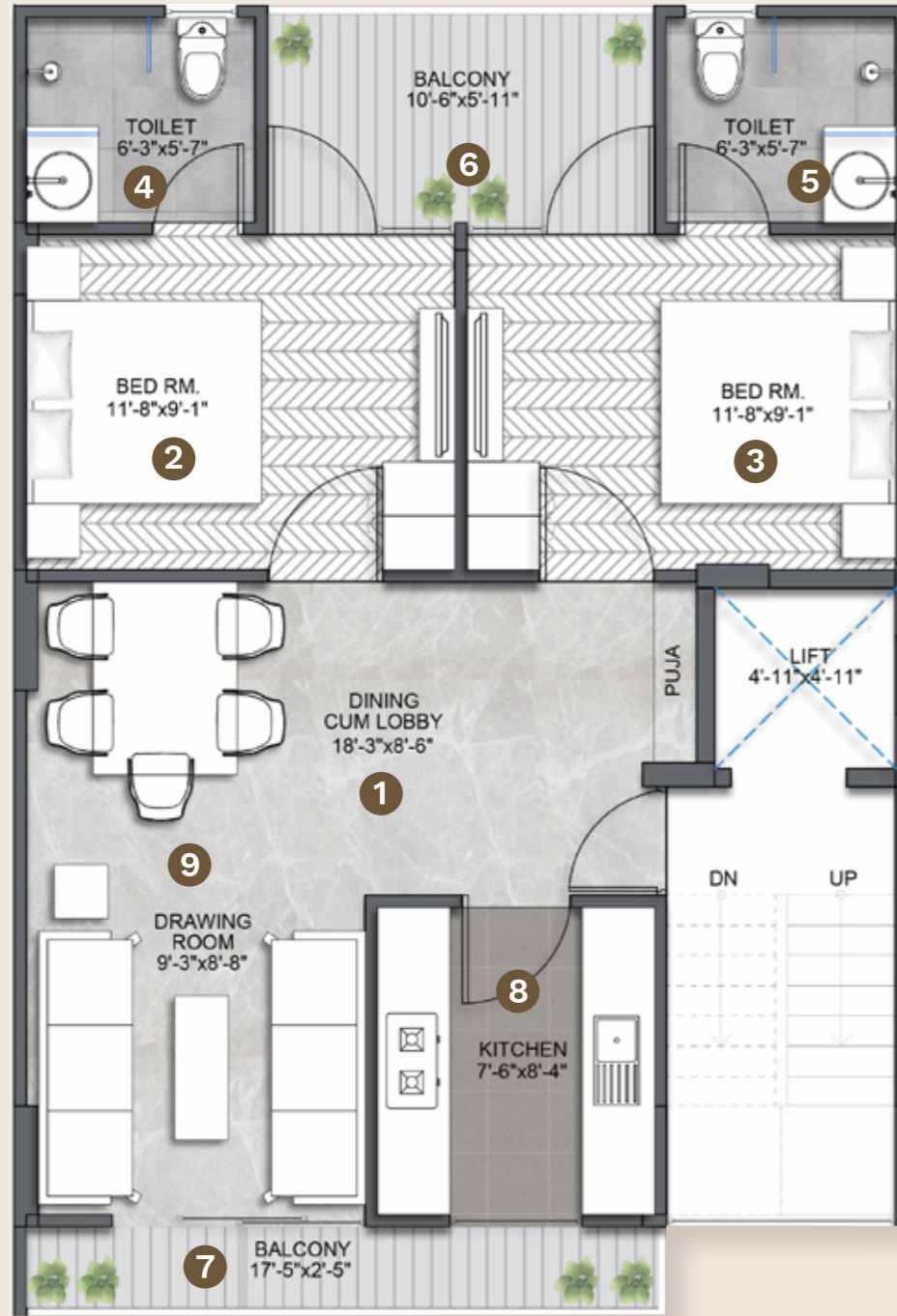
SITE PLAN



- 1 Garden
- 2 Front & Back Gate
- 3 Commercial Area
- 4 Club Prime

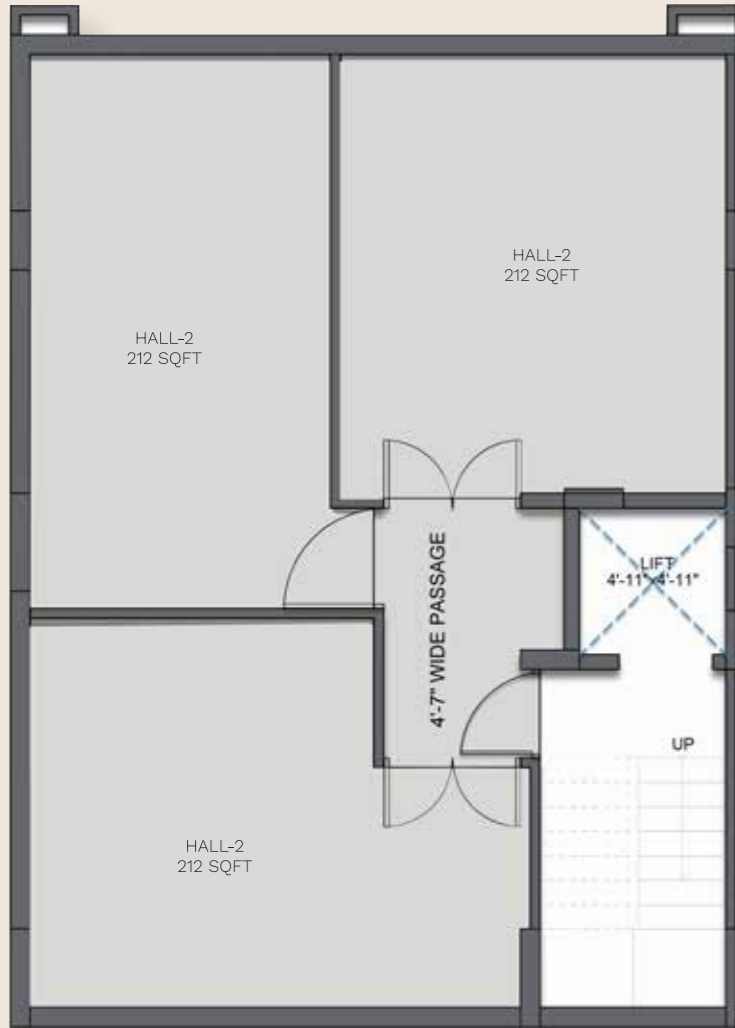


2 BHK TYPICAL *FLOOR PLAN*



- ① Dining cum Lobby
18'-3" x 8'-6"
- ② BR1
11'-8" x 9'-1"
- ③ BR2
11'-8" x 9'-1"
- ④ T1
6'-3" x 5'-7"
- ⑤ T2
6'-3" x 5'-7"
- ⑥ Balcony 1
10'-6" x 5'-11"
- ⑦ Balcony 2
17'-5" x 2'-5"
- ⑧ Kitchen
7'-6" x 8'-4"
- ⑨ Drawing Room
9'-3" x 8'-8"

2 BHK FLOOR PLAN



**BASEMENT
FLOOR PLAN**



**STILT
FLOOR PLAN**

TERRACE FLOOR PLAN



2 BHK TYPICAL FLOOR PLAN (L)



- | | | | | |
|---|---|---|--|---|
| <p>1 Dining
14'-8" * 8'-8"</p> | <p>2 Drawing Room
11'-4" * 8'-2"</p> | <p>3 BR1
10'-9" * 11'-8"</p> | <p>4 BR 2
11'-9" * 13'-7"</p> | <p>5 Toilet 1
4'-11" * 6'-11"</p> |
| <p>6 Toilet 2
7'-10" * 4'-5"</p> | <p>7 Kitchen
8'-10" * 7'-10"</p> | <p>8 Lobby
4'-11" * 10'-0"</p> | <p>9 Balcony 1
5'-10" * 7'-2"</p> | <p>10 Balcony 2
16'-8" * 3'-6"</p> |

2 BHK FLOOR PLAN (L)

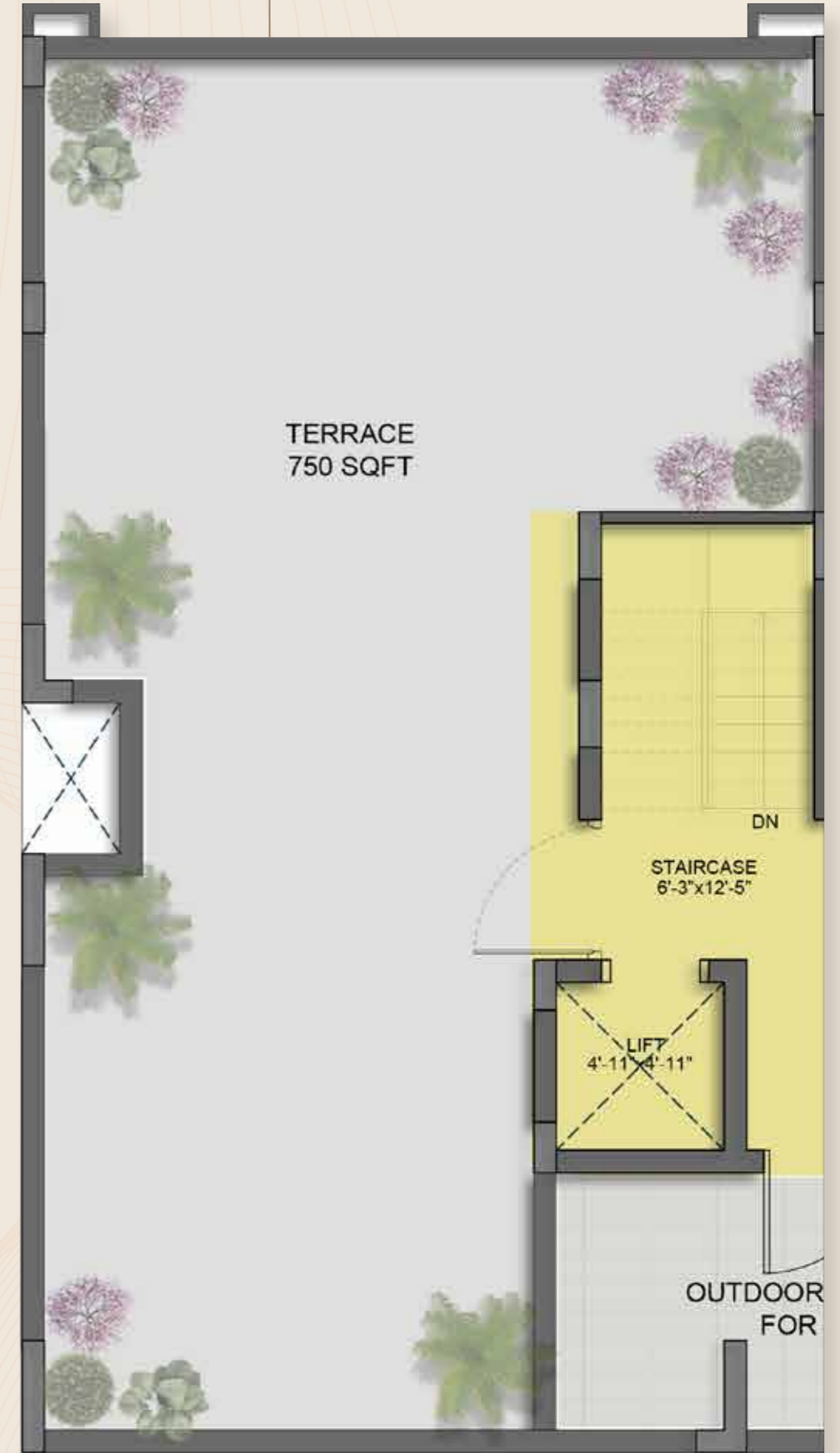


STILT
FLOOR PLAN

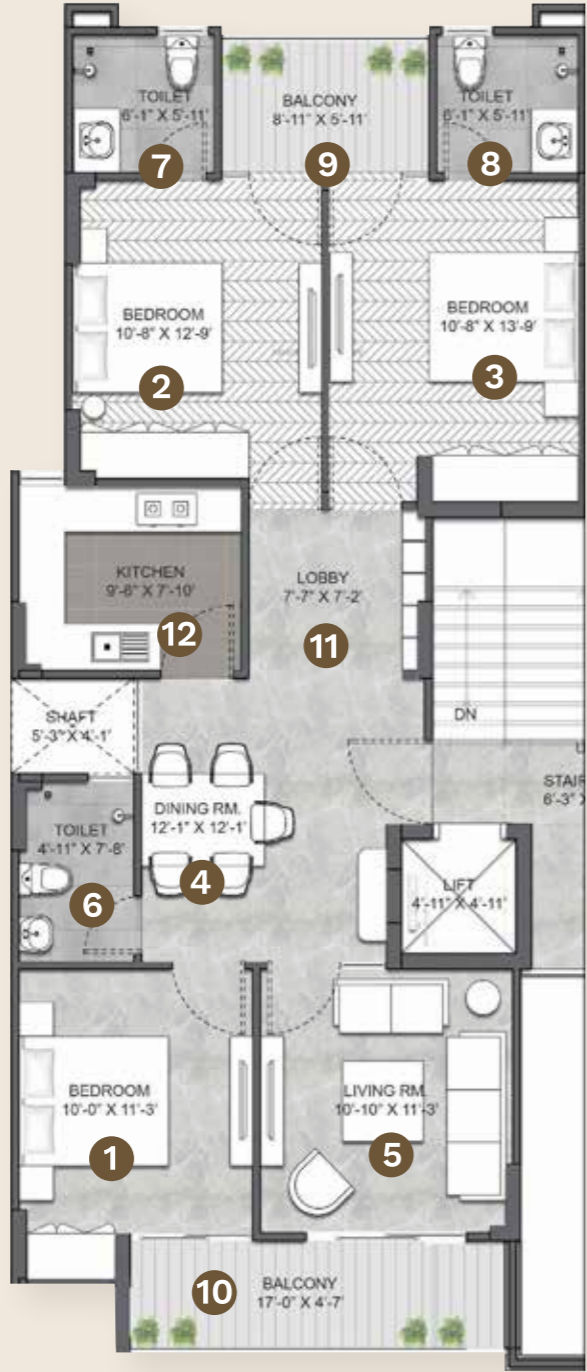


BASEMENT
FLOOR PLAN

TERRACE FLOOR PLAN



3 BHK FLOOR PLAN



- 1 BR1
10'-0" * 11'-3'
- 2 BR 2
10'-8" * 12'-9'
- 3 Living Room
10'-10" * 11'-3'
- 4 Dining
12'-1" * 12'-1'
- 5 BR 3
10'-8" * 13'-9'
- 6 Toilet 1
4'-11" * 7'-8'
- 7 Toilet 2
6'-1" * 5'-11'
- 8 Toilet 3
6'-1" * 5'-11'
- 9 Balcony 1
8'-11" * 5'-11'
- 10 Balcony 2
17'-0" * 4'-7'
- 11 Lobby
7'-7" * 7'-2'
- 12 Kitchen
9'-6" * 7'-10'

3 BHK FLOOR PLAN



**BASEMENT
FLOOR PLAN**



**STILT
FLOOR PLAN**

TERRACE FLOOR PLAN



Living Room & Drawing Room

Particulars	Specifications	Make	Electrical	Particulars	Make
Floors	International Stone Marble Flooring	N/A		Fan points	Schneider, Havells or Siemens or Equivalent
Walls	Gypsum Plaster with Acrylic Emulsion Paint	Kajaria, Somany, Nitco Or Equivalent		Light points	Schneider, Havells or Siemens or Equivalent
Ceiling	Acrylic Emulsion Paint/ OBD Paint	Asian, Berger or Equivalent		Ceiling light point	Schneider, Havells or Siemens or Equivalent
Doors	Entrance Timber Flush Door/ Polish Veneered Flush Door	Alpro, Nayur Door King, Jyoti or Equivalent		Power socket points	Schneider, Havells or Siemens or Equivalent
Window/ Glazing	Anodised/ Powder Coated Aluminium Windows & Frames or UPVC	Fenesta/ Aluplast or Locally Equivalent		Telephone points	Schneider, Havells or Siemens or Equivalent
				Intercom points	Schneider, Havells or Siemens or Equivalent
			Television points	Schneider, Havells or Siemens or Equivalent	
			Call bell points	Schneider, Havells or Siemens or Equivalent	
			Power sockets for AC	Schneider, Havells or Siemens or Equivalent	

Bedroom 1

Floors	International Stone Marble Flooring	N/A		Fan points	Schneider, Havells or Siemens or Equivalent
Walls	Gypsum Plaster with Acrylic Emulsion Paint	Asian, Berger or Equivalent		Light points	Schneider, Havells or Siemens or Equivalent
Ceiling	Acrylic EmulsionPaint/ OBD Paint	Asian, Berger or Equivalent		Ceiling light point	Schneider, Havells or Siemens or Equivalent
Doors	Modular Skin Door/ Laminated Flush Doors	Alpro, Nayur Door King, Jyoti Or Equivalent		Power socket points	Schneider, Havells or Siemens or Equivalent
Window/ Glazing	Anodised/ Powder Coated Aluminium Windows & Frames or UPVC	Fenesta/ Aluplast or Locally Equivalent		Power sockets for exhaust fan points	Schneider, Havells or Siemens or Equivalent
				Power sockets for geyser points	Schneider, Havells or Siemens or Equivalent

Bedroom 2 & 3

Floors	Laminated Wooden Flooring	Greenpanel, Bhutantuff, Rama Ply Or Equivalent)		Fan points	Schneider, Havells or Siemens or Equivalent
Walls	Emulsion Paint	Asian, Berger or Equivalent		Light points	Schneider, Havells or Siemens or Equivalent
Ceiling	Acrylic Emulsion Paint/ OBD Paints	Asian, Berger or Equivalent		Ceiling light point	Schneider, Havells or Siemens or Equivalent
Doors	Entrance Timber Flush Door/ Polish Veneered Flush Door	Alpro, Nayur Door King, Jyoti or Equivalent		Power socket points	Schneider, Havells or Siemens or Equivalent
Window/ Glazing	Anodised/Powder coated Aluminium Windows and frames or UPVC	Fenesta/ Aluplast or Locally Equivalent		Telephone points	Schneider, Havells or Siemens or Equivalent
				Intercom points	Schneider, Havells or Siemens or Equivalent
			Television points	Schneider, Havells or Siemens or Equivalent	
			Call bell points	Schneider, Havells or Siemens or Equivalent	
			Power sockets for AC	Schneider, Havells or Siemens or Equivalent	

Toilet 1

Floors	Anti-skid Tiles	Kajaria, Somany, Nitco Or Equivalent		Fan points	Schneider, Havells or Siemens or Equivalent
Walls	Stone Finish Tiles	Kajaria, Somany, Nitco Or Equivalent		Light points	Schneider, Havells or Siemens or Equivalent
Ceiling	Moisture Resistant/ Cement Board False Ceiling & Acrylic Emulsion Paints/ OBD Paints	Asian, Berger or Equivalent		Ceiling light points	Schneider, Havells or Siemens or Equivalent
Doors	N/A	N/A		Power socket points	Schneider, Havells or Siemens or Equivalent
Window/ Glazing	Anodised/ Powder Coated Aluminium Windows and Frames or UPVC	Fenesta/ Aluplast or Locally Equivalent		Power sockets for exhaust fan points	Schneider, Havells or Siemens or Equivalent
				Power sockets for geyser points	Schneider, Havells or Siemens or Equivalent

Toilet 2 & 3

Floors	Anti-skid Tiles	Kajaria, Somany, Nitco Or Equivalent		Fan points	Schneider, Havells or Siemens or Equivalent
Walls	Stone Finish Tiles	Kajaria, Somany, Nitco Or Equivalent		Light points	Schneider, Havells or Siemens or Equivalent
Ceiling	Moisture Resistant/ Cement Board False Ceiling & Acrylic Emulsion Paints/ OBD Paints	Asian, Berger or Equivalent		Ceiling light points	Schneider, Havells or Siemens or Equivalent
Doors	N/A	N/A		Power socket points	Schneider, Havells or Siemens or Equivalent
Window/ Glazing	Anodised/ Powder Coated Aluminium Windows and Frames or UPVC	Fenesta/ Aluplast or Locally Equivalent		Power sockets for exhaust fan points	Schneider, Havells or Siemens or Equivalent
				Power sockets for geyser points	Schneider, Havells or Siemens or Equivalent

Dinning Room

Dinning Room

Kitchen

Balconies/ Varandah

Particulars	Specifications	Make
Windows/ Glazing	N/A	Fenesta/Aluplast Or Locally Equivalent

Electrical	Particulars	Make
	Fan points	Schneider, Havells or Siemens or Equivalent
	Light points	Schneider, Havells or Siemens or Equivalent
	Ceiling light points	Schneider, Havells or Siemens or Equivalent
	Power socket points	Schneider, Havells or Siemens or Equivalent
	Telephone points	Schneider, Havells or Siemens or Equivalent
	Intercom points	Schneider, Havells or Siemens or Equivalent
	Television points	Schneider, Havells or Siemens or Equivalent
	Call bell points	Schneider, Havells or Siemens or Equivalent
	Power sockets for AC	Schneider, Havells or Siemens or Equivalent

Particulars	Specifications	Make
Floors	Vitrified/Ceramic Tiles	Kajaria, Somany, Nitco or Equivalent
Walls	Combination of Tile and Acrylic Emulsion Paint	N/A
Ceiling	Partially Moisture Resistant/Cement Board False Ceiling and Acrylic Emulsion Paint / OBD Paint	N/A
Doors	N/A	N/A
Window/ Glazing	Anodised/Powder coated Aluminium Windows and frames or UPVC	Fenesta/Aluplast or Locally Equivalent
Floors	Anti-skid Tiles	Kajaria/Nitco/Somany
Walls	Durable Exterior Grade Paint	Asian, Berger or Equivalent
Ceiling	Durable Exterior Grade Paint	N/A
Doors	Entrance Timber Flush Door/ Polish Veneered Flush Door	Alpro, Nayur Door King, Jyoti or Equivalent
Window/ Glazing	N/A	N/A

SPECIFICATIONS



Artistic Impression™

PRIME DEVELOPMENTS™

Prime Developments was founded in 2023 with a commitment to excellence in everything we do. From the materials we choose to the design and construction, meticulous attention to detail is always at the core. Our high standards ensure that every project not only meets but exceeds expectations, delivering homes that reflect superior craftsmanship, durability, and long-lasting value. Quality is not just an outcome: it's embedded in every step of our process.



Emphasis on quality all the way, from conception to completion, across all categories of products



Commitment to building long-lasting legacies through superior craftsmanship



Surpass the benchmark expected by delivering better products



Provide a holistic experience that goes beyond just four walls



Offer unmatched after-sales support

LEADERSHIP



RAKESH MALHOTRA,
Founder & Chairman

A distinguished Chartered Accountant and rank holder, Mr. Malhotra brings over 30 years of extensive experience in the real estate sector. He has proven expertise in strategic planning, land acquisition, and the execution of large-scale developments. He also has a robust track record in real estate financing, resource mobilization, and adeptly managing external stakeholder relationships to drive successful outcomes.



RAGHAV MALHOTRA,
Founder & Director

Mr. Raghav Malhotra is the Founder & Director of Prime Developments and is firm on his belief of providing quality in every aspect. Holding a Master's degree in Accountancy and Finance from Edinburgh Business School, Heriot Watt University, Mr. Malhotra brings a fresh and innovative perspective to the real estate landscape and has a burning desire to revolutionize the same. With his firm values and core principles in place, Mr. Malhotra is committed to create a real estate landscape that is customer-first.

EXPECT MORE



Why should quality be the preserve of the rich?

With 'Expect More' we set the expectation that the brand consistently goes above and beyond what is typically offered in the market. This message aligns with the promise of delivering superior quality, attention to detail, and an enhanced living experience.

It challenges potential homeowners to raise their standards and expect more in terms of design, construction, amenities, and customer service. It conveys confidence and positions the brand as one that delivers not just homes, but elevated lifestyles, ensuring buyers feel they are getting more value, comfort, and satisfaction than they anticipated.